



Presentation Pointer User Manual

Version 1.6.0

February 2016

www.presentation-assistant.com

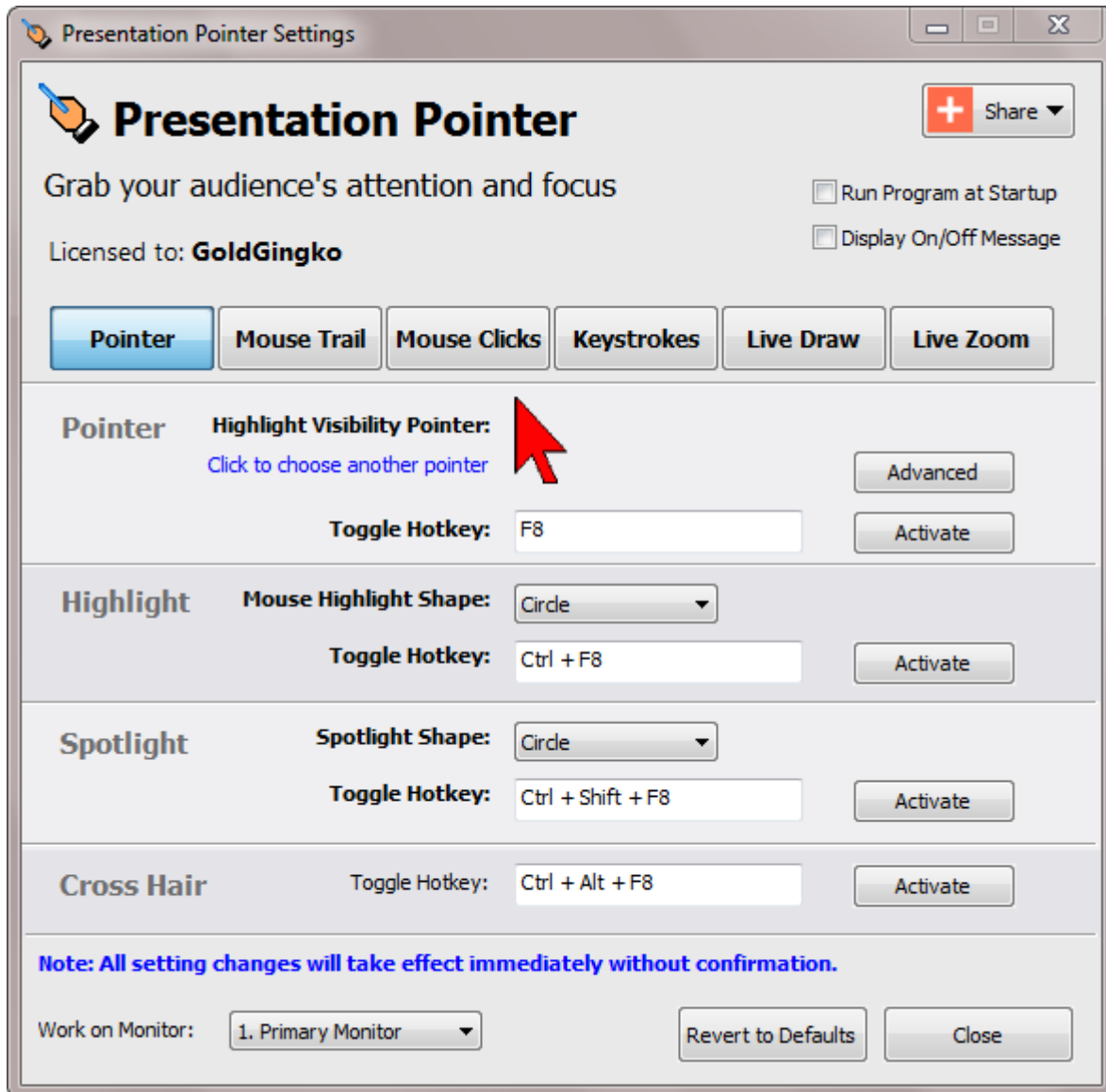


Contents

Contents	ii
1. Overview	1
2. Features List	3
3. Getting Started	4
4. Highlight Mouse Pointer	6
5. Mouse Trail	9
6. Mouse Clicks Visible Effect	11
7. Display Keystrokes	13
8. Live Draw on Screen	15
9. Live Zoom in Screen	17
Technology Support	19

1. Overview

Presentation Pointer is a presentation and demonstration tool helps you get straight to the point. It provides visual cues about what and where you are doing things on your computer. This leaves you to explain about the processes you are demonstrating without having to explain the whatabouts and whereabouts of the things you are demonstrating.



Presentation Pointer offers a series of eye-catching cursors. The **Highlight mouse movements** option surrounds the mouse pointer with a geometric shape (**Circle, Ellipse, Rectangle or Round Rectangle**). And the **Spotlight** option puts a "spotlight" shape (**Circle, Ellipse, Rectangle or Round Rectangle**) around your cursor and dims the surrounding area. Be sure that the right part of the screen is in the limelight!

Presentation Pointer added more visual and audible mouse click effects including different colors for different buttons. The audience not only sees the mouse clicks but also hears them. It also displays your keystrokes in an overlay at the bottom of the screen, so your audience will know exactly which keys

you've pressed. In addition to all this, Presentation Pointer also allows you to draw freely on the screen but not lock the screen.

Presentation Pointer is an essential tool for everyone doing demos at tradeshows, presentations and trainings.

2. Features List

Pointer Effect

- Highlight Visibility Pointer
- Highlight Mouse Movements
- Spotlight Effect
- Cross Hair

Mouse Trail

- Leaves a light trail as you move your pointer

Mouse Click Effect

- Display a circle when you click your mouse
- Different colors for different buttons
- Animation Effect
- Play Click Sounds

Keystrokes Displaying

- Displays your keystrokes in an overlay at the bottom of the screen.
- Keystroke Filter: Allows you to define a list of custom keystrokes that will not be displayed.

Live Drawing

- Allows you to draw freely on the screen but not lock the screen.
- Draw horizontal, vertical lines
- Draw arrow lines
- Press hotkey to clear all

Live Zoom

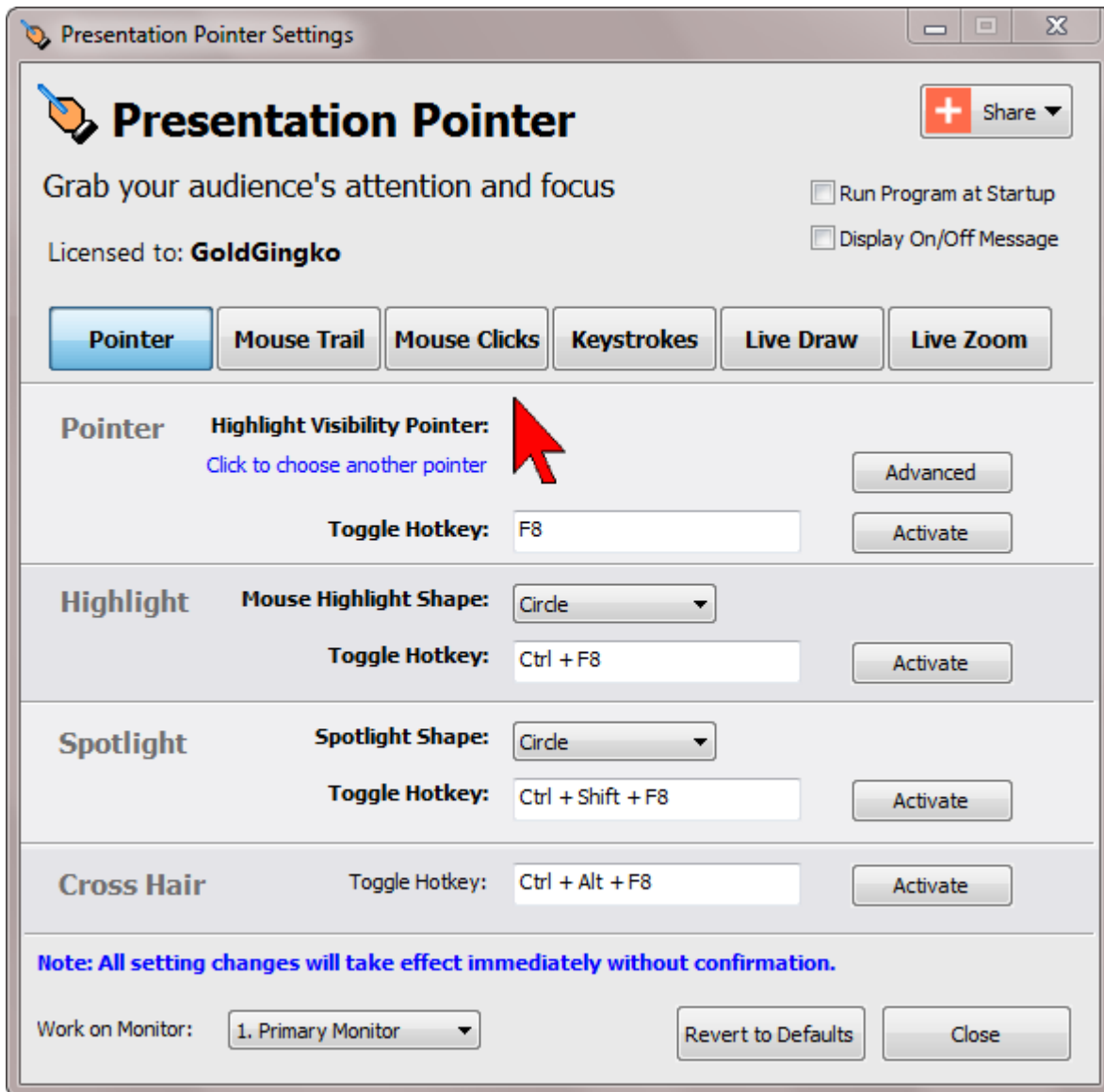
- Zoom in and zoom out the windows but allows you to work on the screen.
- Support the drawing

Flexible, Easy to Use

- Activate or deactivate all effects with the toggle Hotkey.
- All effects can be operated in two different modes: Standalone or Together.
- Everything about Presentation Pointer is customizable: you can change all the hotkeys and adjust options to control appearance and behaviors of Presentation Pointer's effects.

3. Getting Started

Launch Presentation Pointer and you will see the Settings Window opened.




Now you are ready to use Presentation Pointer. Just press the pre-defined hotkey (**F8** by default) and you should see the Pointer being activated.

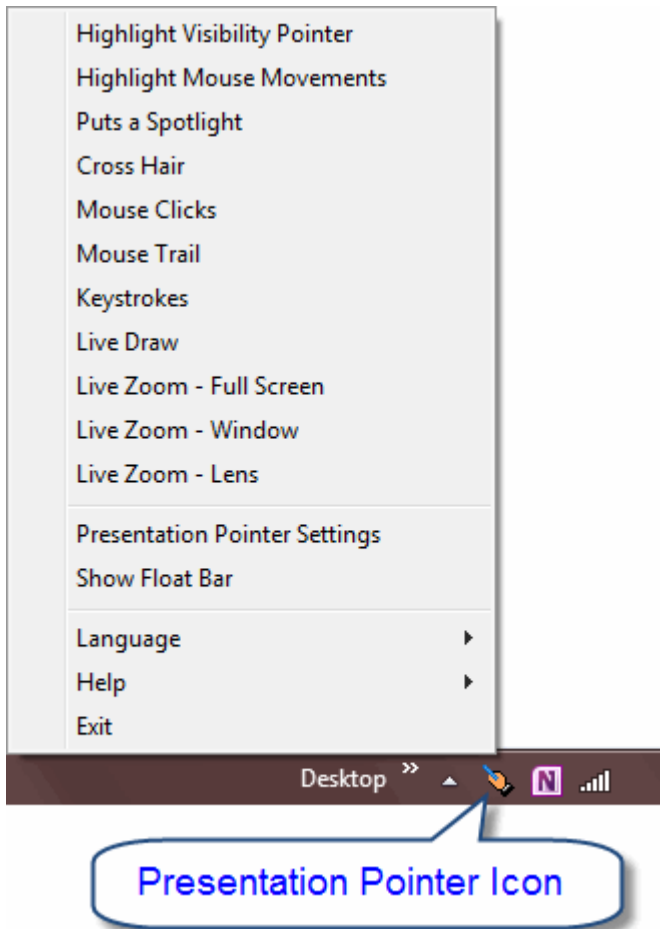
And there is a float bar floating on the screen.



By clicking on it will pop up a toolbar.



Alternatively you can also activate the effect or access the settings through the Presentation Pointer menu by right click the icon  in system tray.



The Mouse Trail, Mouse Clicks, Keystrokes and Live Draw function can be operated in two different modes: Standalone or together with the Pointer effect. The first mode means, you can make that effects independently controllably. The latter mode means the effect will automatically be toggled whenever the Pointer effect is toggled.

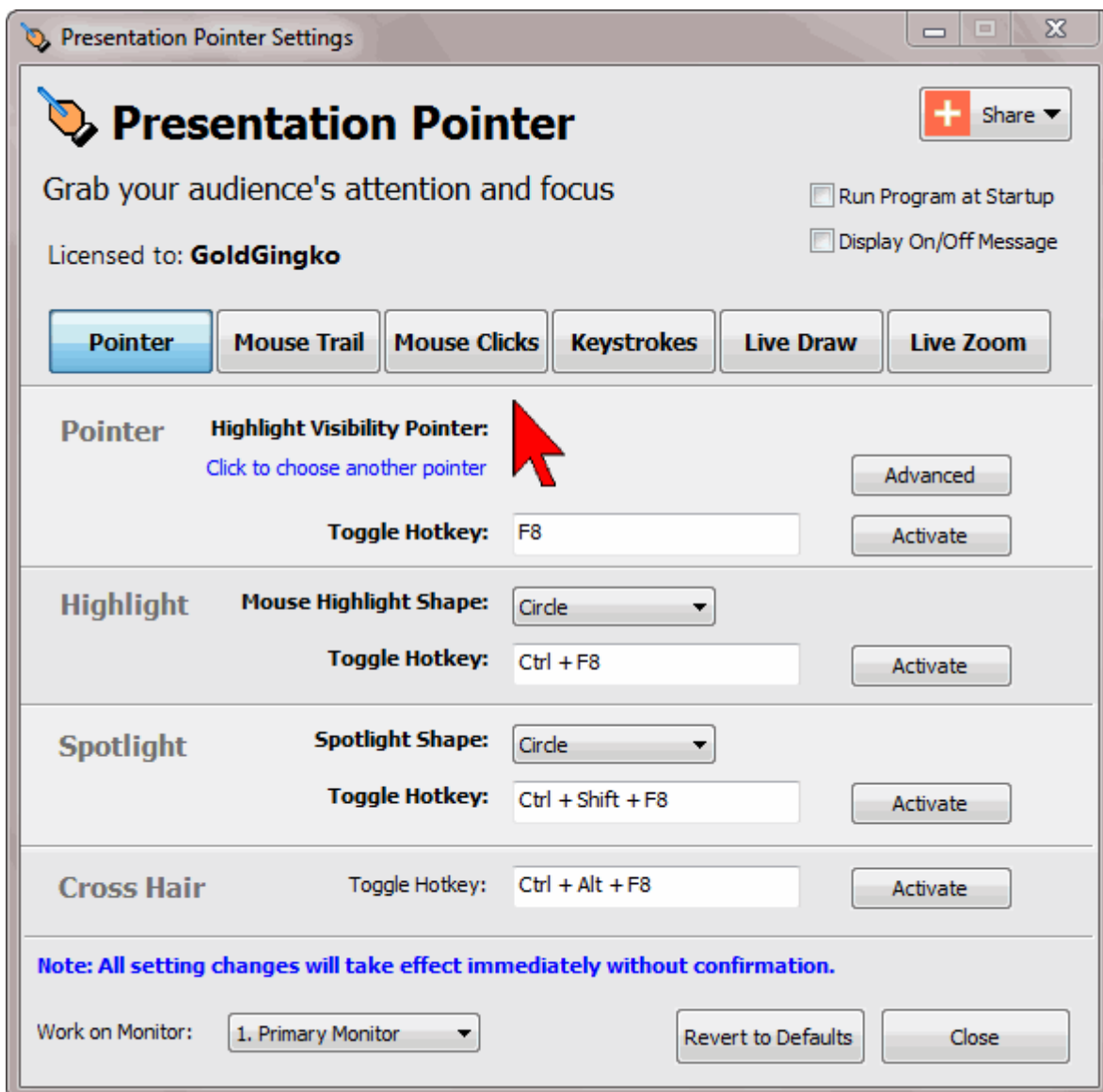
Switch on the effect when giving a demo in front of an audience or even in a 1:1 situation, and your audience will be able to follow you much easier.

Everything about Presentation Pointer is customizable: you can change all the hotkeys and adjust options to control appearance and behaviors of Presentation Pointer's effects.

4. Highlight Mouse Pointer

Focusing your viewer's attention on that important part of your presentation becomes more creative and effective with Presentation Pointer. Not only can you change the look of your mouse cursor, you can also light up the area you point to. Be sure that the right part of the screen is in the limelight!

- The **Pointer** option does provide an eye-catching cursor.
- The **Highlight** option surrounds the mouse pointer with a geometric shape (**Circle, Ellipse, Rectangle or Round Rectangle**).
- And the **Spotlight** option puts a "spotlight" shape (**Circle, Ellipse, Rectangle or Round Rectangle**) around your cursor and dims the surrounding area.
- The **Cross Hair** option display a cross hair on the full screen.



Activation

Toggle Hotkey

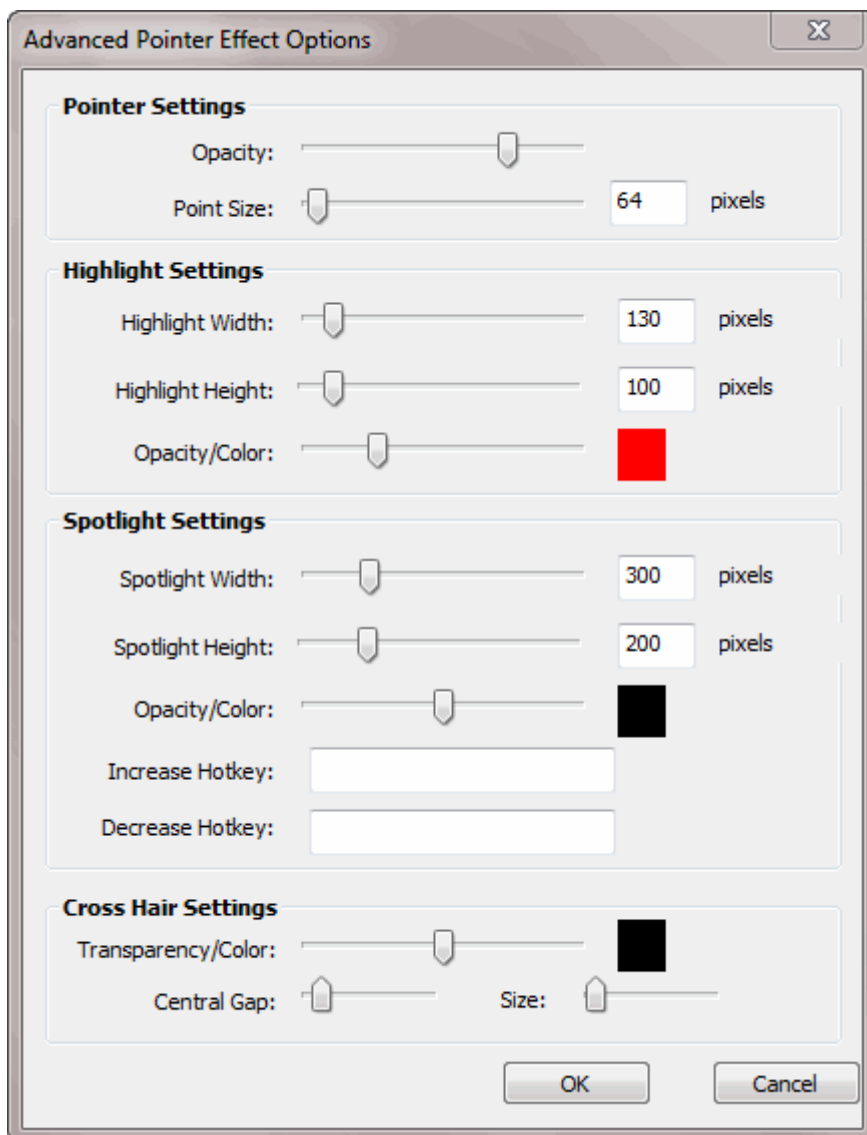
www.presentation-assistant.com

By default, you should see the key assigned as hot key for every option (**Pointer**, **Highlight**, **Spotlight**), which means that pressing **the hot key** once activates the effect. Pressing the same key again deactivates it. This is what's referred to by Toggle: The same key switches something on and off, much like a light switch at home.

And please note you can press ESC key two times to turn off the **Highlight**, **Spotlight** or **Cross Hair**.

Advanced Options

A few power user options can be found in a new dialog that appears when pressing the **Advanced...** button in the top right of the page.

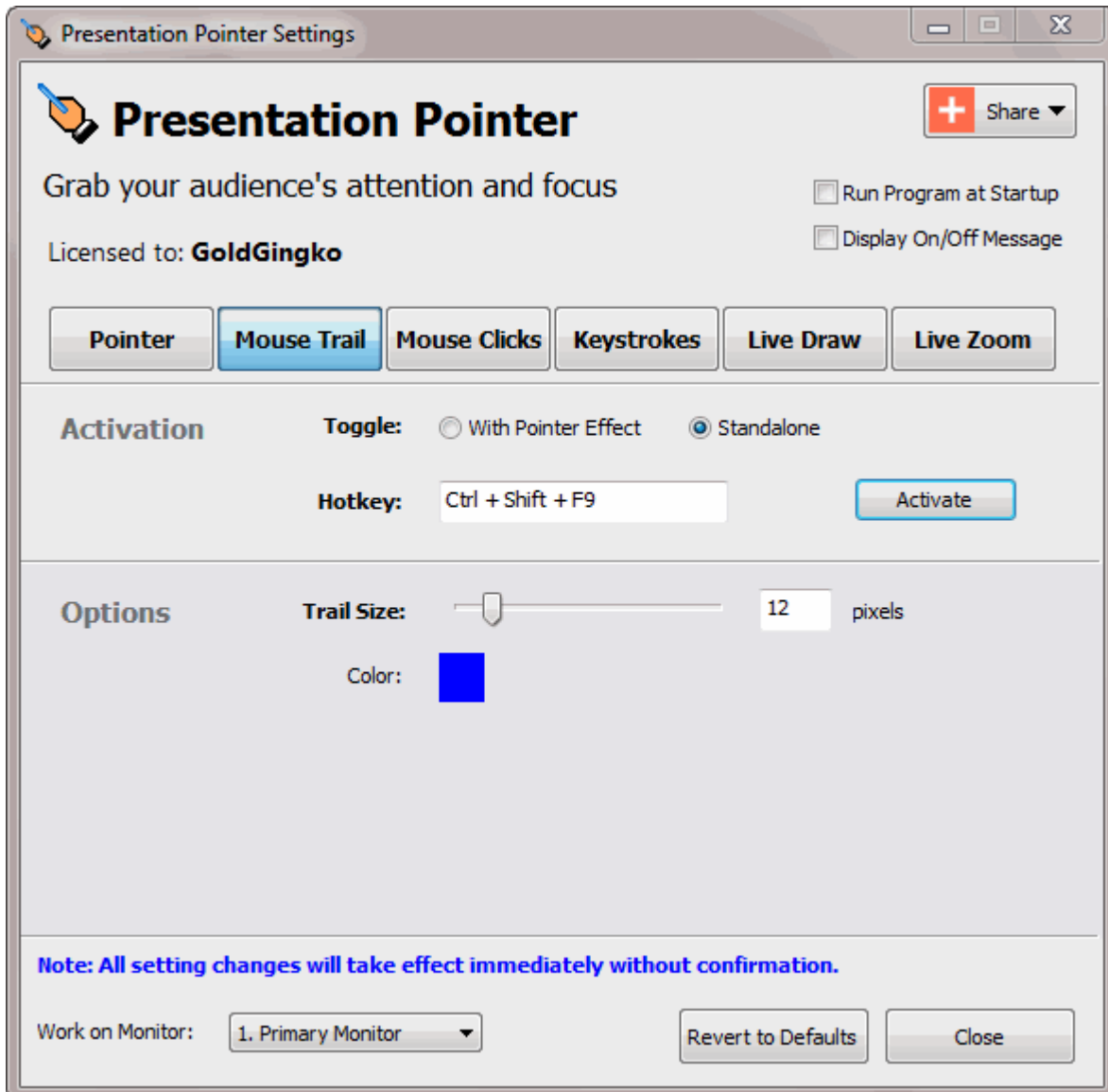


Options	Description & Use
Pointer Opacity	This controls the amount of dimming for the Pointer in percent. The higher the value, the more opaque the Pointer. The lower the value, the more transparent the Pointer becomes.

Highlight Width	Define the width of the highlight.
Highlight Height	Define the height of the highlight.
Highlight Opacity	This controls the amount of dimming for the highlight area background color in percent. The higher the value, the more opaque the background color. The lower the value, the more transparent the background of the highlight becomes.
Highlight Color	The highlight area background color.
Spotlight Width	Define the width of the spotlight.
Spotlight Height	Define the height of the spotlight.
Spotlight Opacity	This controls the amount of dimming for the Spotlight background color in percent. The higher the value, the more opaque the background color. The lower the value, the more transparent the background of the Spotlight becomes.
Spotlight Color	The Spotlight background color.
Increase/Decrease Hotkey	In order to change the size of the highlight or spotlight, you can also assign hotkeys.
Cross Hair Transparency & Color	Define the Transparency and color of the cross hair.
Cross Hair Central Gap	Define the central gap size of the cross hair.
Cross Hair Size	Define the line size of the cross hair

5. Mouse Trail

When you activate the Mouse Trail, the pointer will leave a light trail as you move it. You'll find this to be a great way to show people what to focus on. You can change the color of the trail.



Activation

The Mouse Trail effect can be operated in two different modes: Standalone or together with the Pointer effect. The first mode means, you can make the Mouse Trail effect independently controllably. The latter mode means the Mouse Trail effects will automatically be toggled whenever the Pointer effect is toggled. By default, you should see the **Ctrl + Shift + F9** key assigned as hot key, which means that pressing **Ctrl + Shift + F9** once activates the Mouse Trail effect. Pressing the same key again deactivates it.

Options

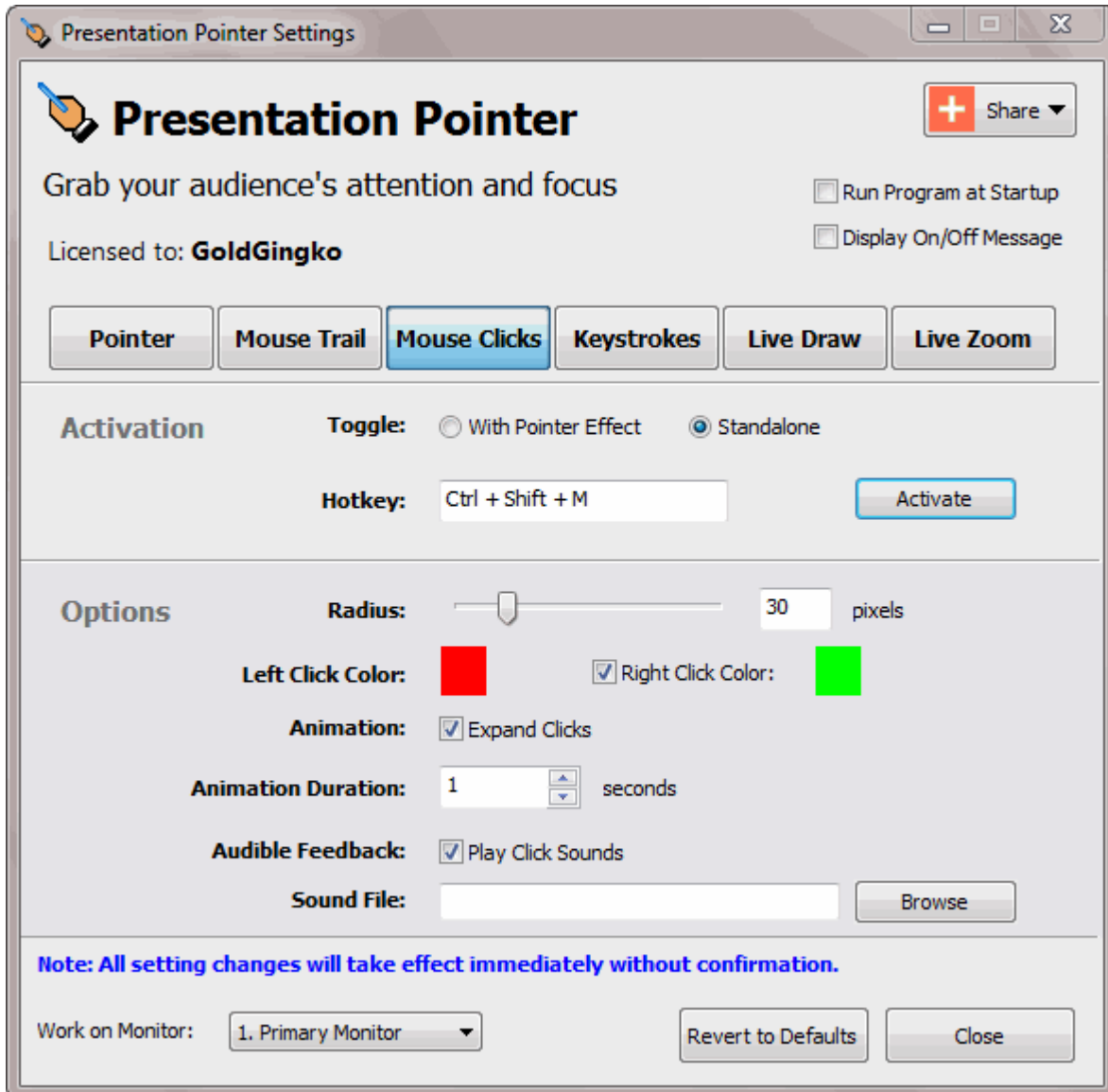
Options	Description & Use
---------	-------------------

www.presentation-assistant.com

Trail Size	Define the size of the trail
Color	The color for trail

6. Mouse Clicks Visible Effect

A visual and audible effect can give feedback when you pressed a mouse key. Mouse Clicks, as shown below, display a circle if you click one mouse button. Adjust all settings related to mouse clicks on this page.



Activation

The Mouse Clicks effect can be operated in two different modes: Standalone or together with the Pointer effect. The first mode means, you can make the Mouse Click effect independently controllably. The latter mode means the Mouse Click effects will automatically be toggled whenever the Pointer effect is toggled. By default, you should see the **Ctrl + Shift + M** key assigned as hot key, which means that pressing **Ctrl + Shift + M** once activates the Mouse Clicks effect. Pressing the same key again deactivates it.

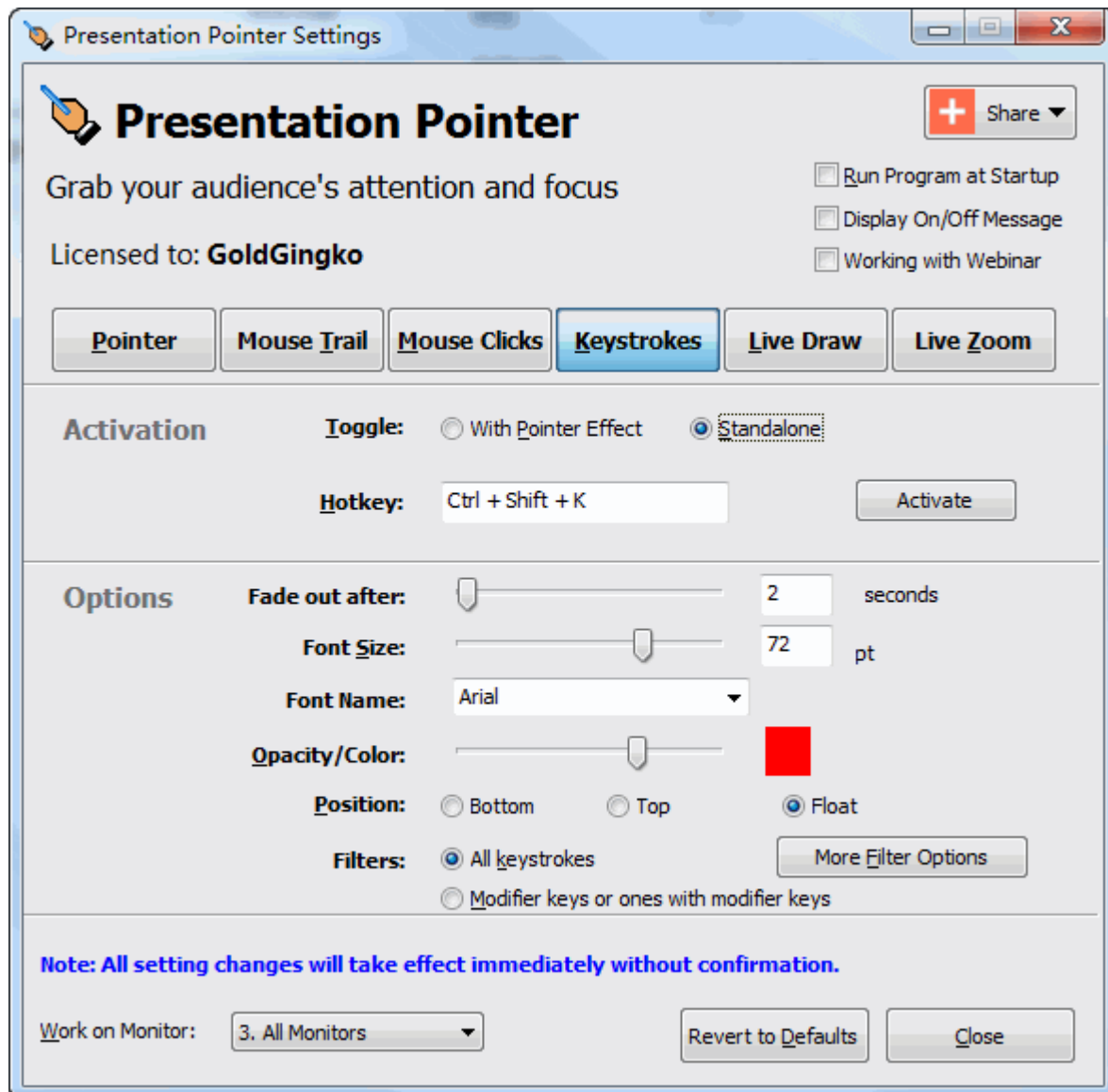
Options

Options	Description & Use
Radius	Define the radius of the circles
Left Click Color	The color for left-clicking
Right Click Color	The color for right-clicking
Animation	The animation refers to expanding circles from the click origin.
Animation Duration	The duration of the click animation.
Audible Feedback	When this option is enabled sounds of mouse click will be produced when pressing and releasing the mouse button.

7. Display Keystrokes

With the Keystrokes function you can display large characters on the screen for whichever keys you press (including modifier keys such as Shift, Alt, Control, and Windows). Using Keystrokes as you manually type out the various controlling key operations when demonstrating software, your audience will know exactly which keys you've pressed.

The options in the Keystrokes page control if and how keyboard usage is being visualized on screen.



Activation

The Keystrokes Displaying can be operated in two different modes: Standalone or together with the Pointer effect. The first mode means, you can display keystrokes on your computer screen without the Point Effect being on. The latter mode means the keystrokes get displayed as soon as you have activated the Point Effect.

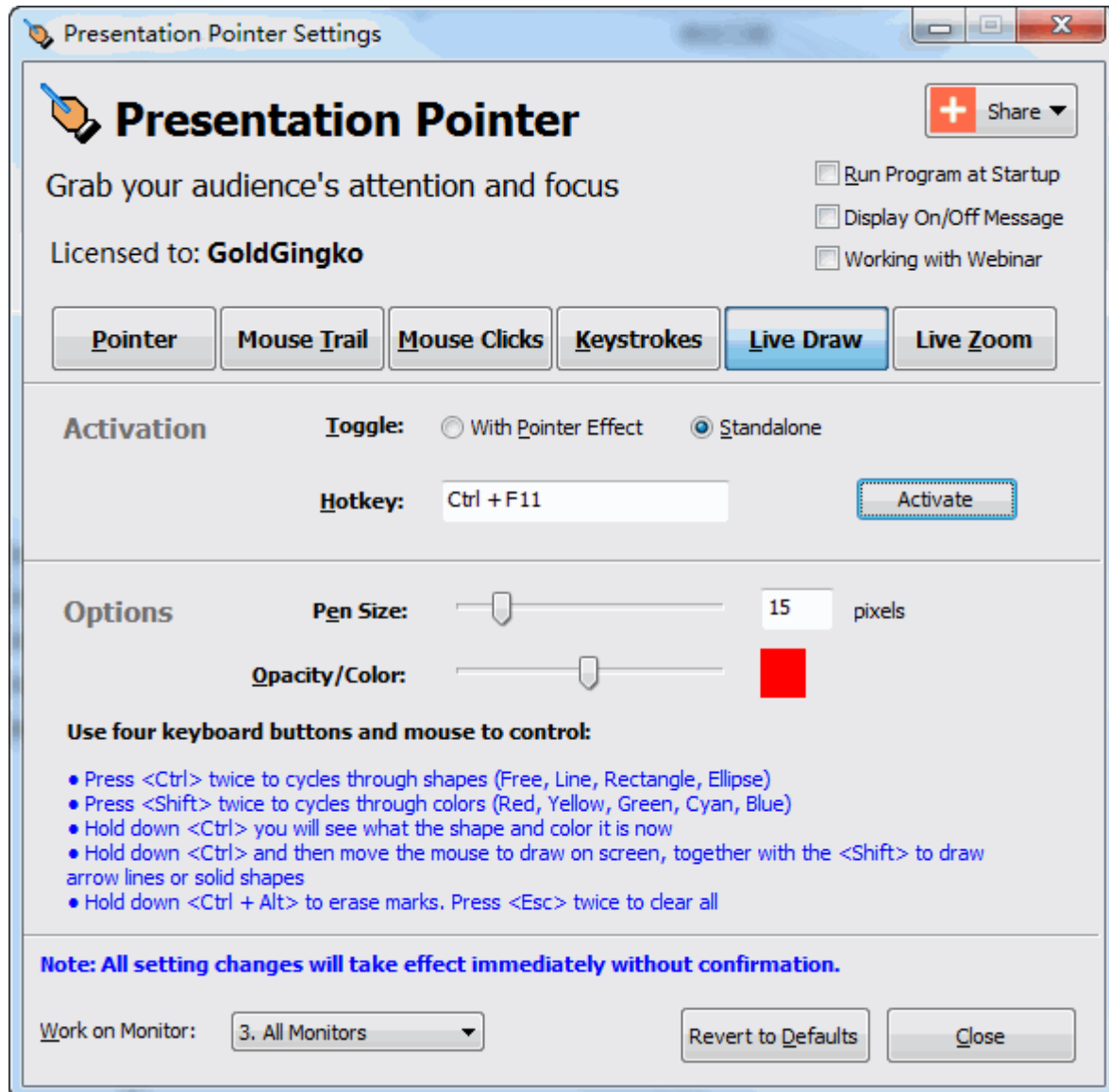
By default, you should see the **Ctrl + Shift + K** key assigned as hot key, which means that pressing **Ctrl + Shift + K** once activates the Keystrokes Displaying. Pressing the same key again deactivates it.

Options

Options	Description & Use
Fade Out After n Seconds	The keystroke display will stop automatically after a certain timeout.
Font Size	This slider controls font size of the keystroke display in points.
Opacity	This controls the amount of dimming for the keystroke display background color in percent. The higher the value, the more opaque the background color. The lower the value, the more transparent the background of the keystroke display becomes.
Color	The keystroke display background color.
Filter	The Filter lets you determine whether you want all keystrokes displayed or you rather want to filter out keystrokes that don't make sense in your presentation situation.

8. Live Draw on Screen

The Live Drawing function allows you to draw freely on the screen but not lock the screen. As it switches on, you can hold down the <Ctrl> key and then move the mouse to draw on the screen. You can draw on a “live” screen. For example you can draw on a video as it was playing, draw lines and shapes on any application to point out whatabouts and whereabouts of the things you are demonstrating.



Activation

The Live Drawing can be operated in two different modes: Standalone or together with the Pointer effect. The first mode means, you can make the Live Drawing independently controllably. The latter mode means the Live Drawing will automatically be toggled whenever the Pointer effect is toggled.

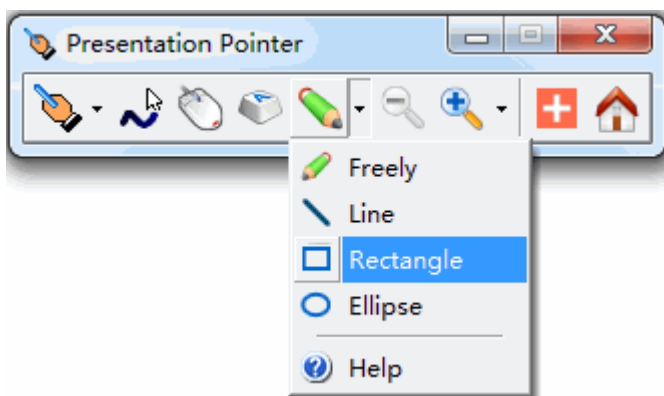
By default, you should see the **Ctrl + F11** key assigned as hot key, which means that pressing **Ctrl + F11** once activates the Live Drawing. Pressing the same key again or press ESC key two times deactivates it.

How to Live Draw on Screen?

Use four keyboard buttons and mouse to control:

- Press <Ctrl> twice to cycles through shapes (Free, Line, Rectangle, Ellipse)
- Press <Shift> twice to cycles through colors (Red, Yellow, Green, Cyan, Blue)
- Hold down <Ctrl> you will see what the shape and color it is now
- Hold down <Ctrl> and then move the mouse to draw on screen, together with the <Shift> to draw arrow lines or solid shapes
- Hold down <Ctrl + Alt> to erase marks. Press <Esc> twice to clear all

You can also select what shape to draw like the figure below.



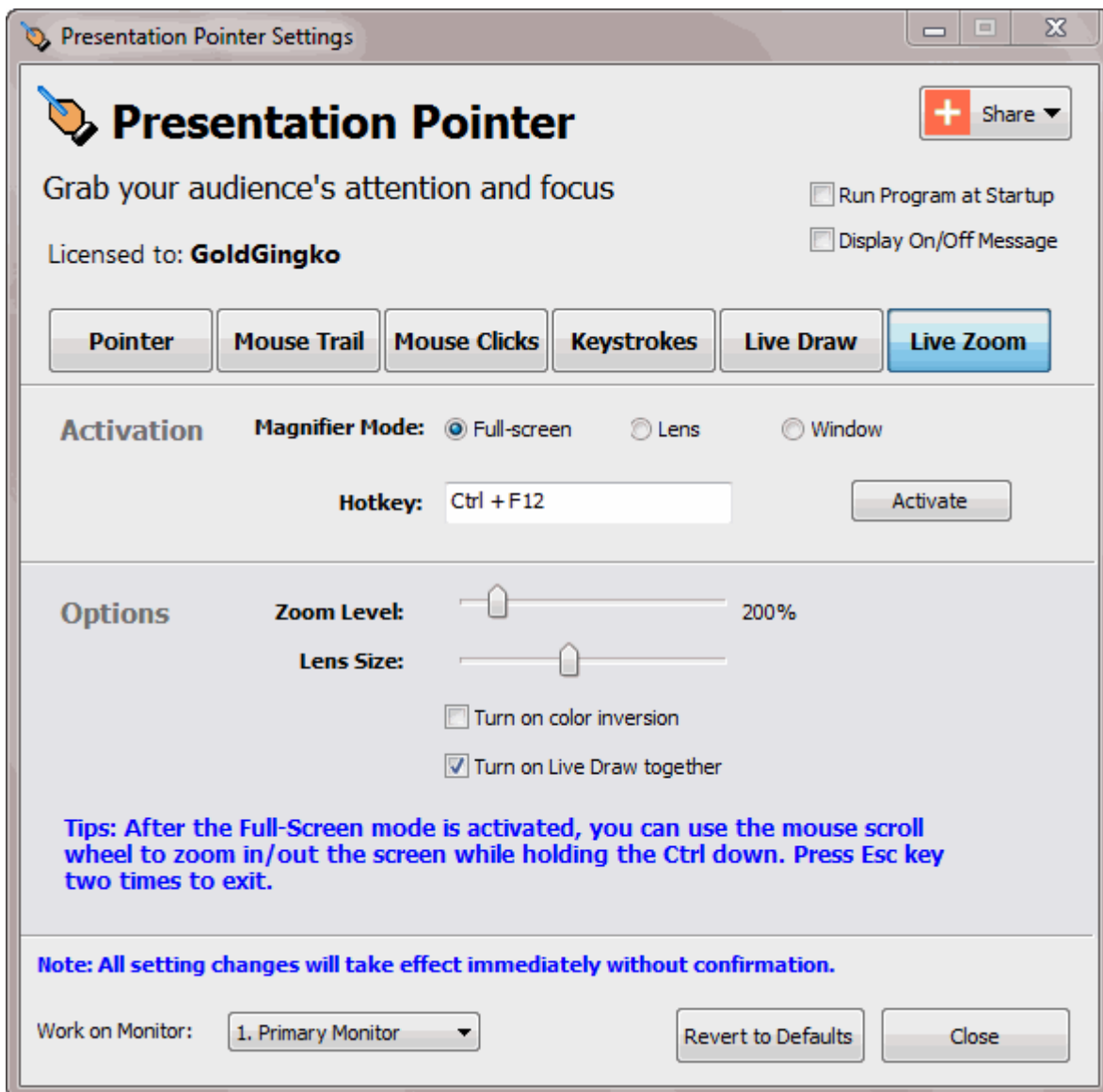
Options

Options	Description & Use
Pen Size	The pen size in pixels.
Opacity	This controls the amount of dimming for drawings in percent. The higher the value, the more opaque the background. The lower the value, the more transparent the drawings become.
Color	The pen color
Clear Hotkey	Press this hotkey to clear all drawings.

9. Live Zoom in Screen

With the **Live Zoom feature** of Presentation Pointer, you can zoom in and zoom out the windows and still use its usual utilities, such as the buttons, commands, context menus.

Launch Presentation Pointer and you will see the settings window opened. Click the **Live Zoom** button and so you can activate the **Live Zoom mode**. As it switches on, you can hold down the **<Ctrl>** key and then use the mouse scroll wheel to zoom in or out the screen. You can draw freely on the magnified screen.



Activation

There are three Magnifier modes:

- **Full-screen mode.** In full-screen mode, your entire screen is magnified. Depending on the size of your screen and the zoom level you choose, you might not be able to see all of the screen at the same time.
- **Lens mode.** In lens mode, the area around the mouse pointer is magnified. When you move the mouse pointer, the area of the screen that's magnified moves along with it.
- **Window mode.** In Window mode, only a portion of the screen is magnified, leaving the rest of your desktop unchanged. You can then control which area of the screen is magnified.

By default, you should see the **Ctrl + F12** key assigned as hot key, which means that pressing **Ctrl + F12** once activates the **Live Zoom mode**. Pressing the same key again or press ESC key two times deactivates it.

Options

Options	Description & Use
Zoom Level	You can also use the mouse scroll wheel to zoom in or out the screen while holding the Ctrl down.
Turn on color inversion	Turning on color inversion increases the contrast between items on your screen, which can help make your screen easier to see.
Turn on Live Draw together	When you switch on Live Zoom mode, the Live Draw will activate too. So you can draw freely on the magnified screen.

Technology Support

Customers' satisfaction is the best gift for us. We would like to try our best to provide you with the best products and service. So we welcome any question or suggestion.

We promise to our customers that we will deal with emails within 24 hours after receiving them. Free trial customers are also welcome to enjoy our effective One Business Day Email Service! Please do not hesitate to contact us.

<http://www.presentation-assistant.com/>

E-mail: support@presentation-assistant.com